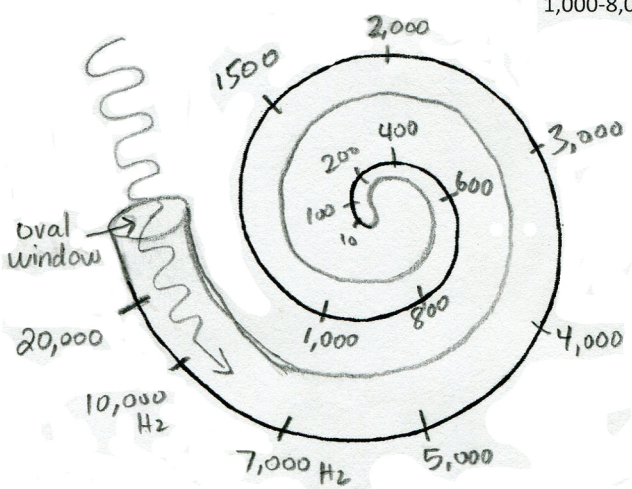
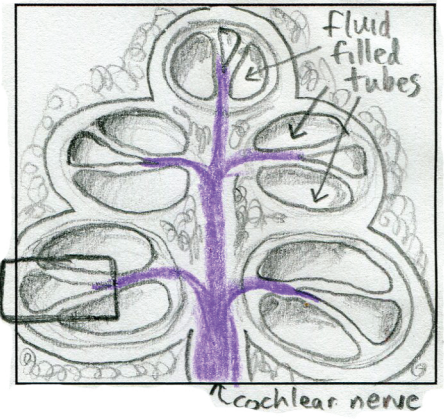


16 Hz = lowest note on tuba  
 65 Hz = lowest note on cello  
 261 Hz = "middle C"  
 440 Hz = "A" for tuning orchestra  
 4186 Hz = highest note on piano  
 1,000-8,000 Hz - bird songs

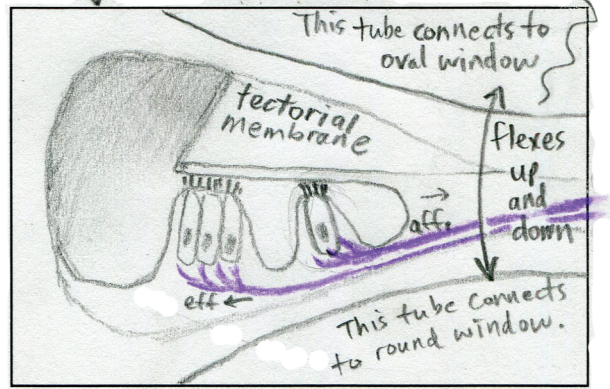
SENSITIVITY AREAS OF THE COCHLEA:



CROSS SECTION OF COCHLEA:



ORGAN OF CORTI:



SOUND WAVES:

