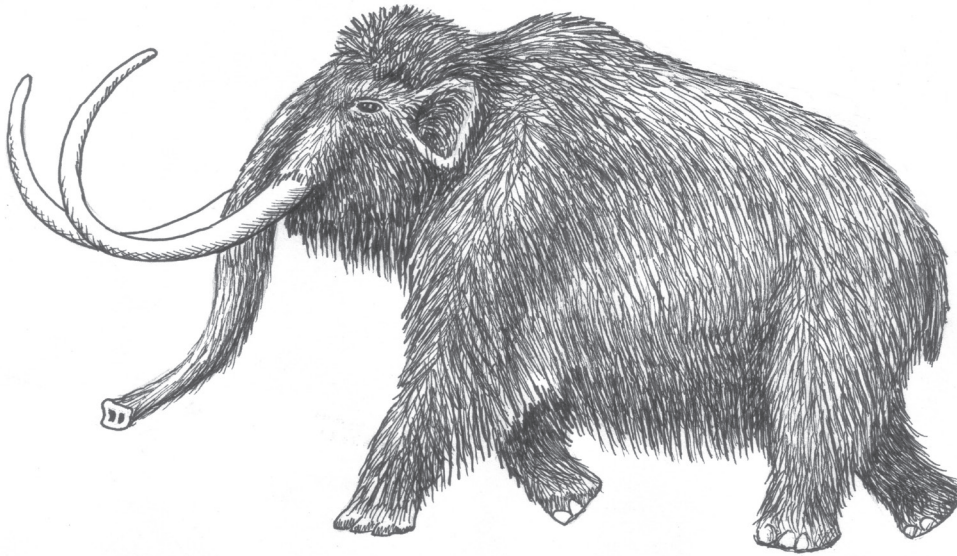


# MAMMOTHS

What do we know about mammoths? Were they related to elephants? Did they live in cold climates? What did they eat? How long did they live? Why are they extinct?



After answering (6), sketch an appropriate background for a living mammoth.

Use the resources that have been recommended to you to find the answers to these questions.

1) Are tusks a type of tooth? \_\_\_\_\_ How fast did they grow? \_\_\_\_\_ What information can be gained from studying the tusks? \_\_\_\_\_

2) Did the mammoths have hair or fur? (What's the difference?) \_\_\_\_\_  
\_\_\_\_\_ Does it have "undercoat"? \_\_\_\_\_

3) Were mammoths all the same color? \_\_\_\_\_

4) Mammoth skin (like elephant skin) lacks two features that are found in the skins of most animals (including yours). What are they? \_\_\_\_\_ and \_\_\_\_\_.

5) Were mammoth ears larger or smaller than those of modern elephants? \_\_\_\_\_

6) What did mammoths eat? \_\_\_\_\_ How do we know this? (list 2 reasons)  
\_\_\_\_\_ and \_\_\_\_\_

7) What has been discovered about the oxygen carrying capacity of mammoth hemoglobin in its red blood cells?  
\_\_\_\_\_

8) If mammoths were alive today would there be any chance they could interbreed? \_\_\_\_\_ Are mammoths more or less closely related to the extinct mastodons than they are to elephants? \_\_\_\_\_

9) One frozen baby specimen has large kidneys. If this was typical of all mammoths, what advantage would this have given them? \_\_\_\_\_

10) Name some other animals that have been found frozen near mammoths: \_\_\_\_\_  
\_\_\_\_\_

Resources you used: 1) \_\_\_\_\_ 2) \_\_\_\_\_ 3) \_\_\_\_\_