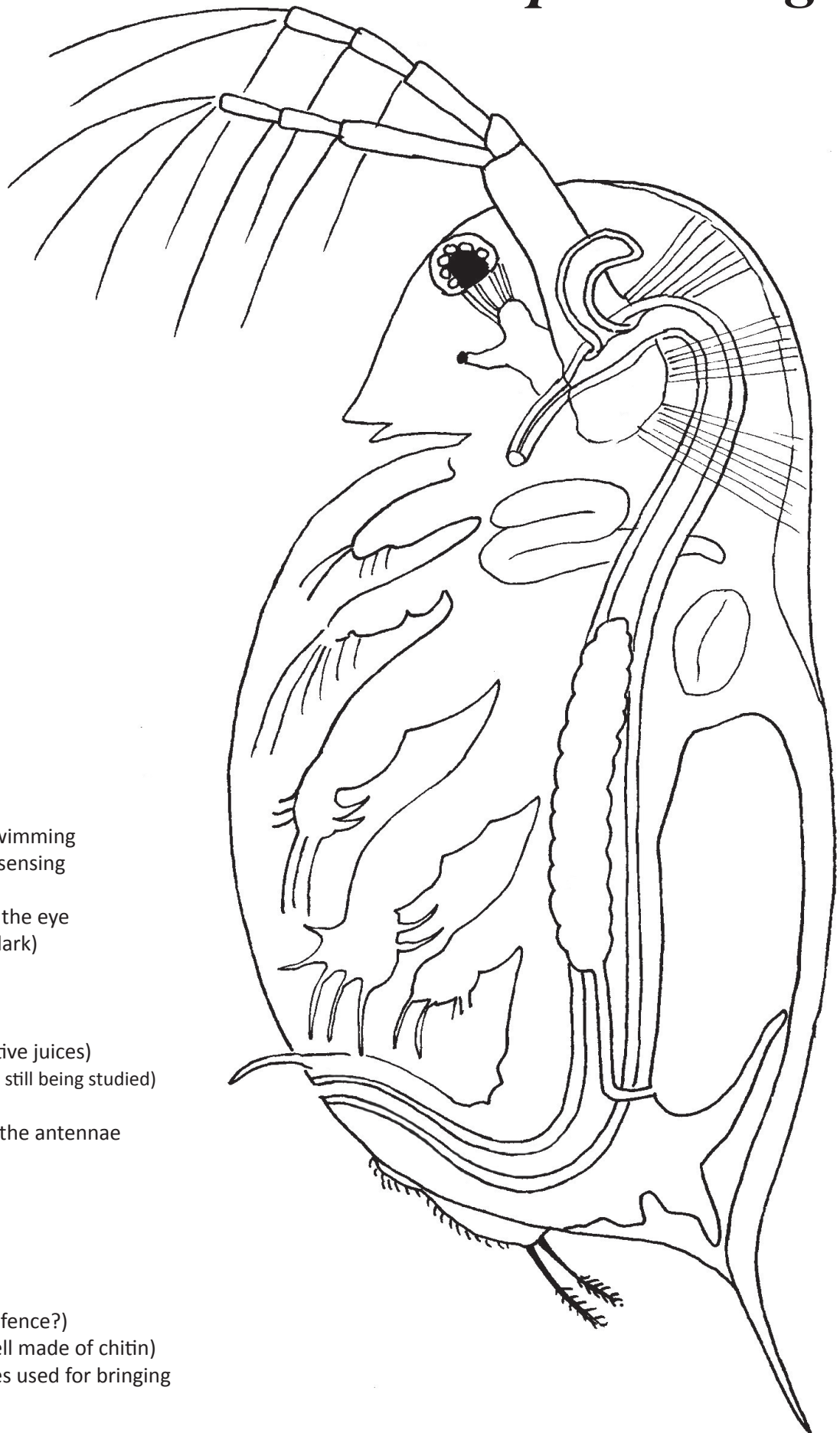


# *Daphnia magna*



- 1- antennae used for swimming
- 2- antennules used for sensing
- 3- compound eye
- 4- muscles that control the eye
- 5- "ocellus" eye (light/dark)
- 6- rostrum
- 7- brain
- 8- mouth
- 9- hepatic caecae (digestive juices)
- 10- shell gland (function still being studied)
- 11- intestine
- 12- muscles that move the antennae
- 13- heart
- 14- brood chamber
- 15- ovary
- 16- spine
- 17- abdominal setae
- 18- anus
- 19- abdominal claw (defence?)
- 20- carapace (outer shell made of chitin)
- 21- thoracic appendages used for bringing in food and water