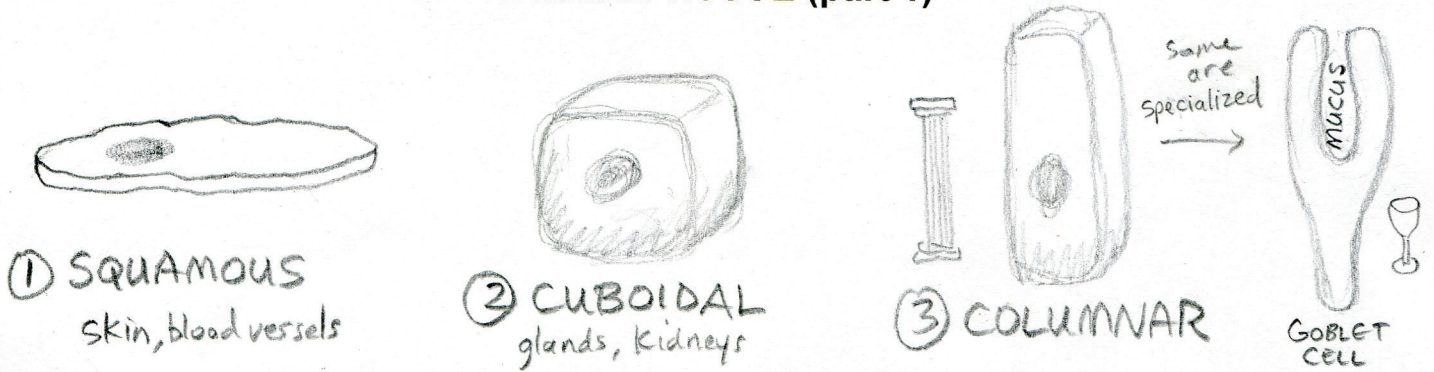


There are many different types of cells in the body, but all of them can be classified into one of the following categories:

- 1) EPITHELIAL - covers surfaces and lines body cavities Ex - epidermis of skin, lining of lungs and digestive tract, walls of blood vessels.
- 2) CONNECTIVE - binds and supports parts. Occurs in matrix of solid, liquid or gel. Ex - ligaments, tendons, cartilage, bone, blood and fat, and dermis of skin.
- 3) MUSCLE - designed for movement. Ex - voluntary, involuntary, cardiac (heart)
- 4) NERVOUS - designed for communication. Ex - brain, spinal cord, peripheral nerves.

EPITHELIAL TISSUE (part 1)



All epithelial tissue is built on BASEMENT MEMBRANE (not made of cells)

Cells are held together by ADHESION JUNCTIONS, using DES MOSOMES  
band chain      body

