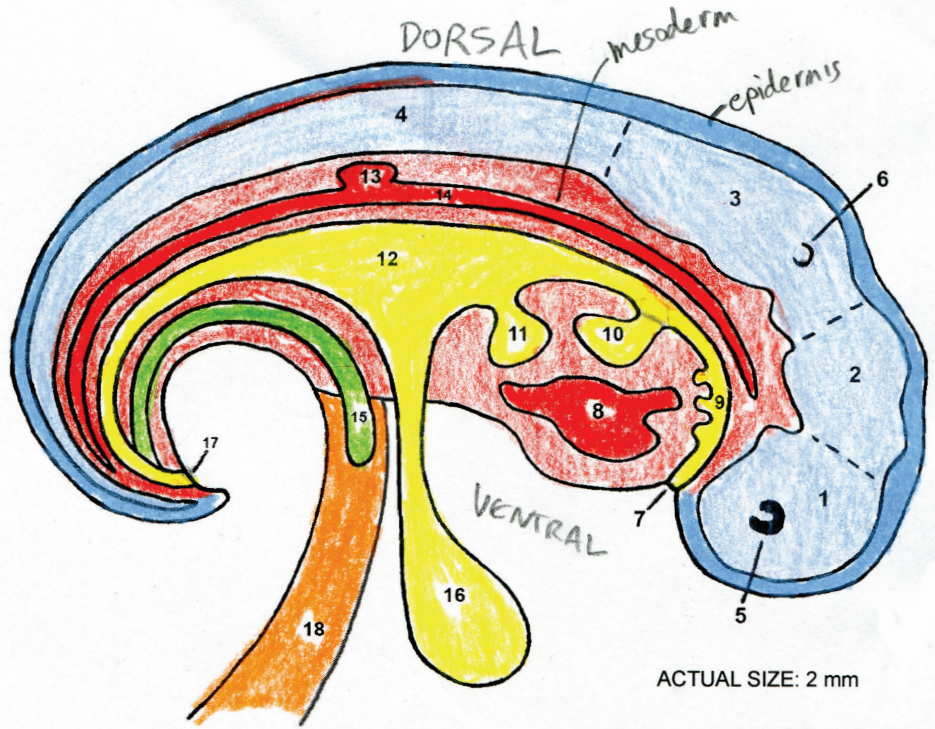


**END OF WEEK 4 (28 DAYS)
SAGGITAL SECTION**

- 1) forebrain
- 2) midbrain
- 3) hindbrain
- 4) spinal cord
- 5) future eye
- 6) future ear
- 7) mouth opening
- 8) heart (has begun beating)
- 9) throat with glands
- 10) lungs
- 11) liver
- 12) stomach and intestines
- 13) Kidney
- 14) dorsal aorta
- 15) allantois
- 16) yolk sac
- 17) cloacal opening
- 18) umbilical stalk



ACTUAL SIZE: 2 mm

NOTE: This is highly simplified. There are other blood vessels, besides the dorsal aorta, but they are not shown. The heart has large vessels coming out of it. There are also tiny vessels connecting to sacs and cord.

END OF WEEK 5 (33-35 DAYS) EXTERNAL VIEW

- 1) eye
- 2) ear
- 3) pharyngeal arches jaw + throat
- 4) heart
- 5) liver
- 6) somites
- 7) arm bud
- 8) leg bud
- 9) "tail" bud
- 10) amnion
- 11) umbilical cord
- 12) yolk sac

