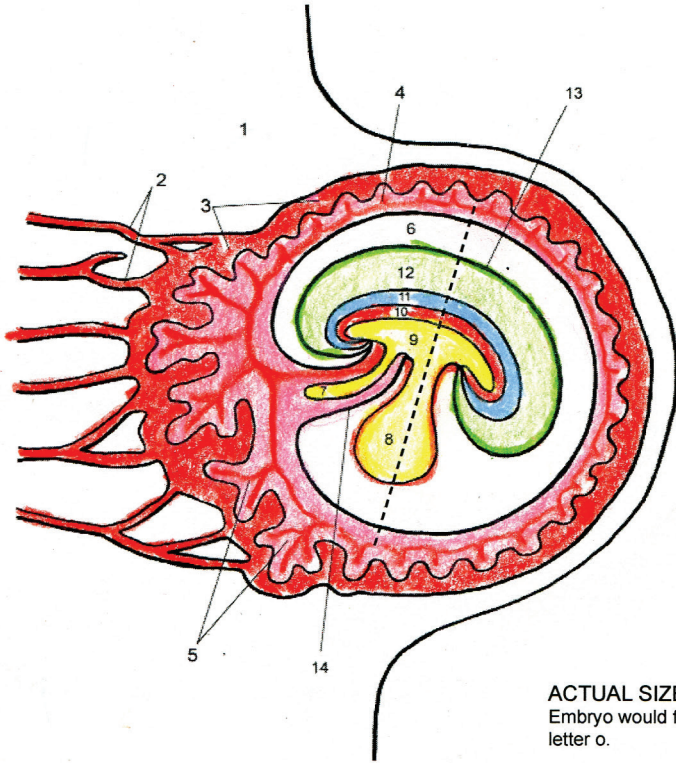
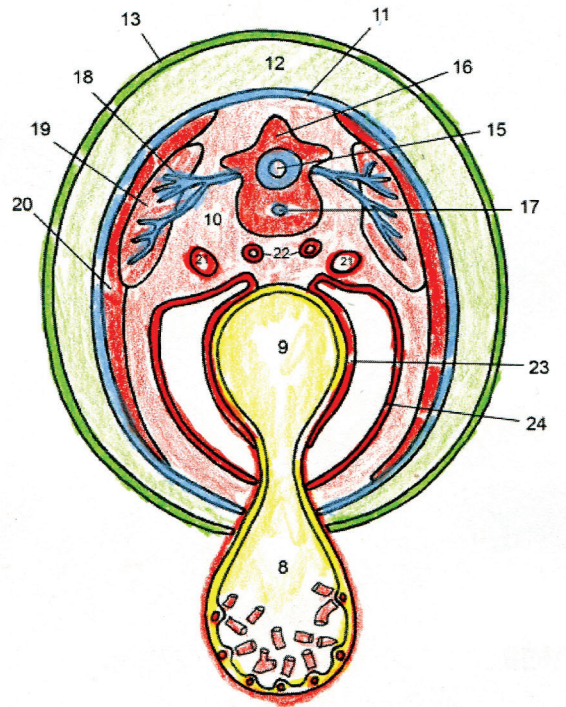


21 DAYS SAGGITAL CROSS SECTION



ACTUAL SIZE: 1 mm
Embryo would fit into this letter o.

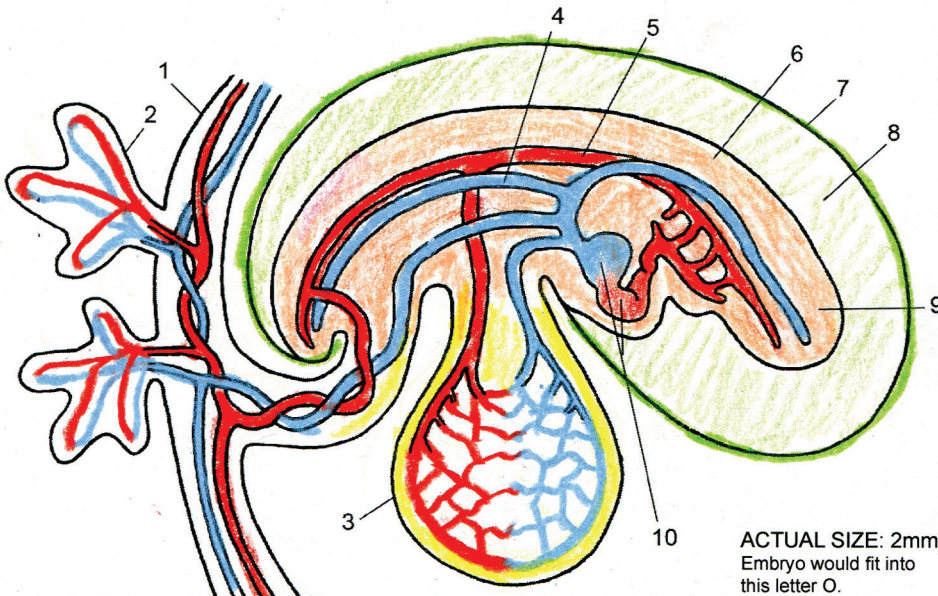
21 DAYS TRANSVERSE CROSS SECTION



- 1) endometrium (lining of uterus)
- 2) maternal capillaries
- 3) maternal blood
- 4) chorion
- 5) chorionic villi (with capillaries)
- 6) chorionic cavity
- 7) allantois
- 8) yolk sac

- 9) gut tube
- 10) mesoderm
- 11) ectoderm/epidermis
- 12) amniotic cavity
- 13) amnion
- 14) umbilical stalk
- 15) neural tube (future spinal cord)
- 16) future vertebra

- 17) notochord
- 18) nerves
- 19) muscle
- 20) dermis
- 21) future kidneys
- 22) heart tubes
- 23) visceral peritoneum
- 24) parietal peritoneum



ACTUAL SIZE: 2mm
Embryo would fit into this letter O.

26-28 DAYS
SAGGITAL CROSS SECTION
SHOWING VASCULARIZATION

- 1) chorion
- 2) chorionic villi
- 3) yolk sac
- 4) cardinal vein
- 5) dorsal aorta
- 6) embryo
- 7) amnion
- 8) amniotic cavity
- 9) future head/brain
- 10) future heart - has begun beating