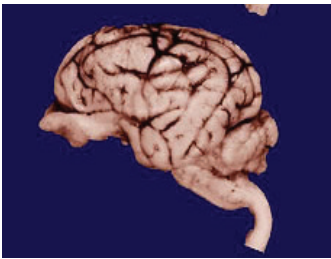


ANIMAL BRAINS

Try to guess which brain belongs to which animal. (Hint: Smarter animals tend to have more wrinkles.) Also, use your general knowledge of about head shape, and position of head on body. All the brains are shown the same size so you can't use actual size clues. You may have to do a little guessing.

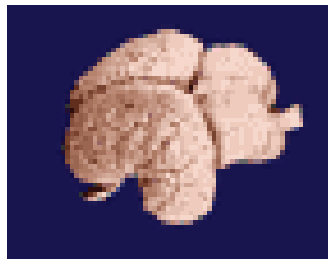
Possible answers: rabbit, rat, cat, dog, sea lion, skunk, squirrel monkey, chimpanzee, elephant, dolphin, human



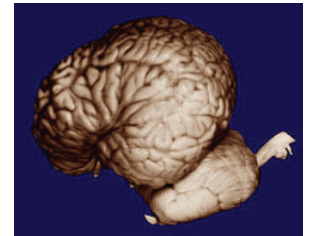
1) _____



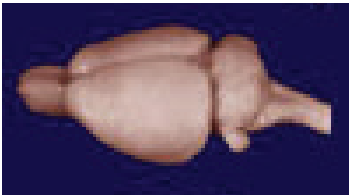
2) _____



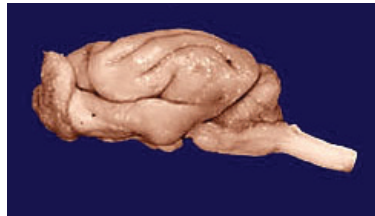
3) _____



4) _____



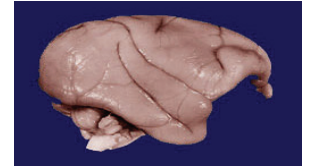
5) _____



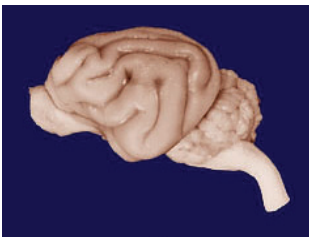
6) _____



7) _____



8) _____



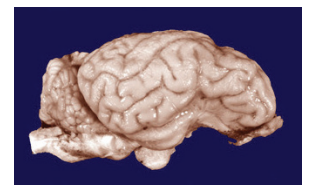
9) _____



10) _____



11) _____



12) _____