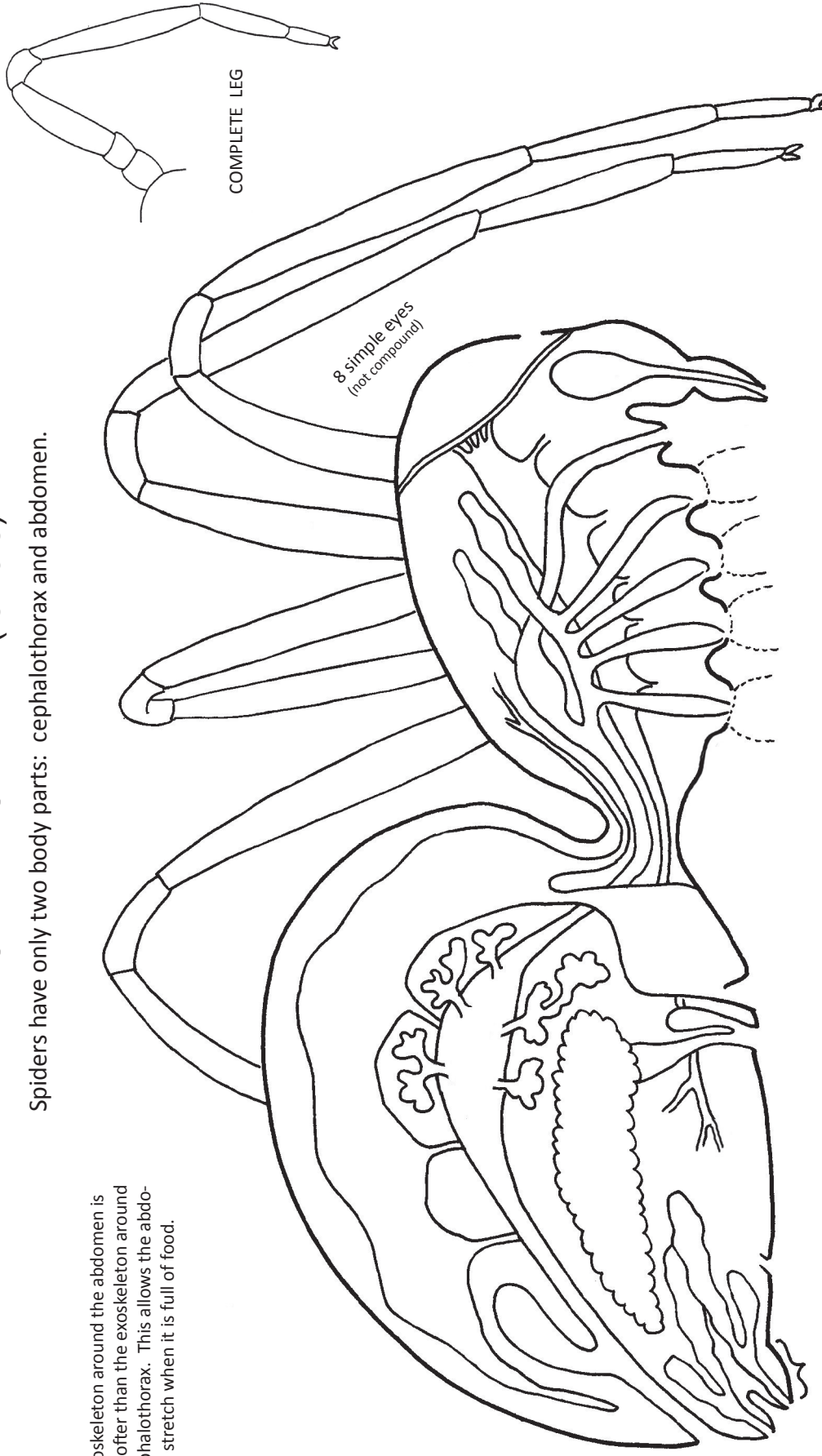


INSIDE A SPIDER (female)

Spiders have only two body parts: cephalothorax and abdomen.

The exoskeleton around the abdomen is much softer than the exoskeleton around the cephalothorax. This allows the abdomen to stretch when it is full of food.



- muscles (attached to exoskeleton)
- "heart" (a tube that contracts)
- nervous system
- digestive system

- book lungs (similar to gills)
- Malpighian tubules (collect wastes, much like our kidneys do)
- venom gland
- silk glands

- 1 = brain
- 2 = pharynx (*fare-inks*)
- 3 = sucking stomach
- 4 = intestine
- 5 = digesting stomach
- 6 = digestive pouches called "caeca" or "ceca" (*see-kah*)
They contain tiny digestive glands but also serve as storage pouches.
- 7 = cloacal (*klo-ack-al*) pouch stores wastes
- 8 = pouch for storing sperm
- 9 = ovary